

A CHARLIE BROWN CHRISTMAS

Featuring LINUS AND LUCY, SKATING, CHRISTMAS TIME IS HERE and O TANNENBAUM

1ST E \flat ALTO SAXOPHONE

Arranged by CARL STROMMEN

"Linus and Lucy"- By VINCE GUARALDI

5



15



23



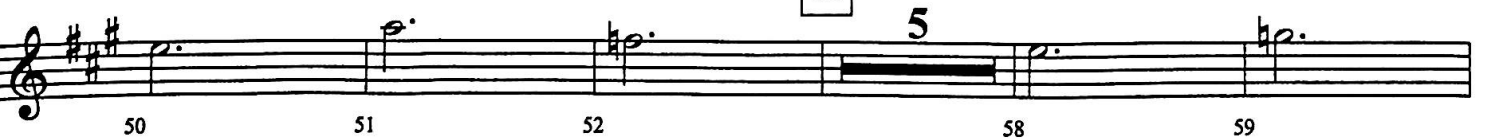
"Skating"- By VINCE GUARALDI

37

Brightly



53



1st Eb Alto Saxophone - 2

66 **5**

60 61 67 68 69

74

70 71 72 73 75

76 77 78 79 80 81

82

decresc. 83 *rall.* 84 85 *rit.*

"Christmas Time is Here"- By LEE MENDELSON and VINCE GUARALDI

86 **Broadly**

mp 87 88 89 90

94

mf 95 96

102

rit. 103 *a tempo sempre legato*

104 105 106 *rall.* 107 108 *molto rit.* 109 *mp*

"O Tannenbaum"- Traditional (based on a setting by Vince Guaraldi)

110 **Broadly**

111 112 113 114 115

1st E♭ Alto Saxophone - 3

118 In a flowing manner

Musical staff 118, measures 116-121. The staff is in treble clef with a key signature of one sharp (F#). The music consists of a continuous eighth-note melody. The dynamic marking *mf* is placed below measure 118. Measure numbers 116, 117, 119, 120, and 121 are indicated below the staff.

125 "Linus and Lucy"- By VINCE GUARALDI

Musical staff 125, measures 122-127. The staff is in treble clef with a key signature of one sharp (F#). The music features a melody with various dynamics and articulations. The dynamic markings *rit.*, *molto rit.*, *p*, and *mp* are placed below the staff. Measure numbers 122, 123, 124, 126, and 127 are indicated below the staff.

131

Musical staff 131, measures 128-133. The staff is in treble clef with a key signature of one sharp (F#). The music consists of a melody with eighth notes and rests. The dynamic marking *mf* is placed below measure 131. Measure numbers 128, 129, 130, 132, and 133 are indicated below the staff.

Musical staff 134-139, measures 134-139. The staff is in treble clef with a key signature of one sharp (F#). The music consists of a melody with eighth notes and rests. Measure numbers 134, 135, 136, 137, 138, and 139 are indicated below the staff.

141

Musical staff 141, measures 140-146. The staff is in treble clef with a key signature of one sharp (F#). The music features a melody with eighth notes and rests. The dynamic marking *f* is placed below measure 141. Measure numbers 140, 142, 143, 144, 145, and 146 are indicated below the staff.

149

Musical staff 149, measures 147-152. The staff is in treble clef with a key signature of one sharp (F#). The music features a melody with eighth notes and rests. Measure numbers 147, 148, 150, 151, and 152 are indicated below the staff.

Musical staff 153-158, measures 153-158. The staff is in treble clef with a key signature of one sharp (F#). The music features a melody with eighth notes and rests. Measure numbers 153, 154, 155, 156, 157, and 158 are indicated below the staff.

Musical staff 159-166, measures 159-166. The staff is in treble clef with a key signature of one sharp (F#). The music features a melody with eighth notes and rests. A second ending bracket labeled '2' spans measures 161-163. Measure numbers 159, 160, 161, 163, 164, 165, and 166 are indicated below the staff.