

# AMERICAN SALUTE

Based on "WHEN JOHNNY COMES MARCHING HOME"

Transcribed from  
composer's original score  
by Philip J. Lang

MORTON GOULD

2nd Trombone (Bass Clef)

**Allegro** ♩ = 140

First musical staff in bass clef, 2/4 time signature. It begins with a dynamic marking of *ff* and a first ending bracket over the final two measures.

Second musical staff in bass clef, continuing the melody.

Third musical staff in bass clef, continuing the melody.

*BSN. I* **A**

Fourth musical staff in bass clef, marked *p*. It begins with a first ending bracket over the final two measures.

Fifth musical staff in bass clef, continuing the melody.

**B**

MUTED

Sixth musical staff in bass clef, marked *mf*. It begins with a first ending bracket over the final two measures.

**C**

3 (open) *BSN. I*

Seventh musical staff in bass clef, marked *pp*. It begins with a first ending bracket over the final two measures.

Eighth musical staff in bass clef, continuing the melody.

Ninth musical staff in bass clef, continuing the melody.

Tenth musical staff in bass clef, continuing the melody.

**D**

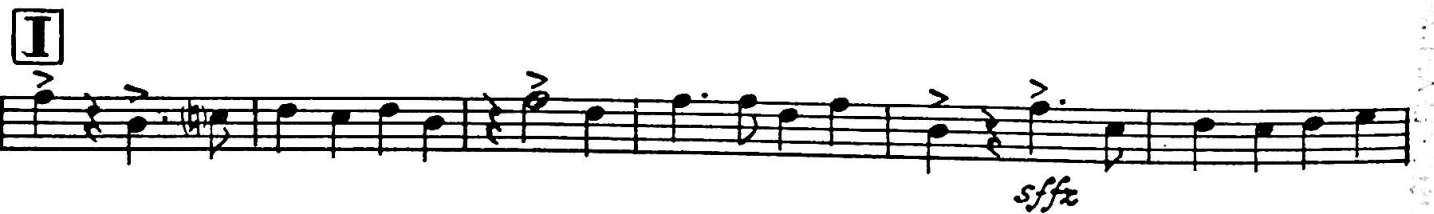
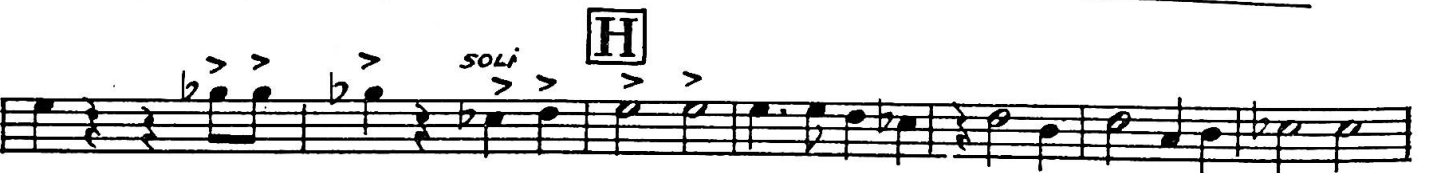
*pp*

Eleventh musical staff in bass clef, marked *pp*. It begins with a first ending bracket over the final two measures.

PROPERTY OF  
COUNTRYSIDE HIGH SCHOOL  
MUSIC DEPARTMENT

2nd Trombone (Bass Clef)

2



Copyright © 1953 by G. Schirmer, Inc.  
New York, N.Y.

