

For the Asbury College Concert Band, Dr. Lynn Cooper, Conductor

# CHRISTMAS CARILLON

James Curnow (ASCAP)  
Concert Band

PERCUSSION 2  
Sleigh Bells  
Suspended Cymbal

Ding! Dong! Merrily On High

No. 1143

Jubiloso  
Sleigh Bells

5



*mf*

9

7

*dim.*

17

Susp. Cym. w/ Mallets

7

25

Sleigh Bells



*p*  $\curvearrowright$  *f*

31

Susp. Cym.



*f*

*mp*

4

39



*p*  $\curvearrowright$  *f*

*mf*

47



*p*  $\curvearrowright$  *mf*

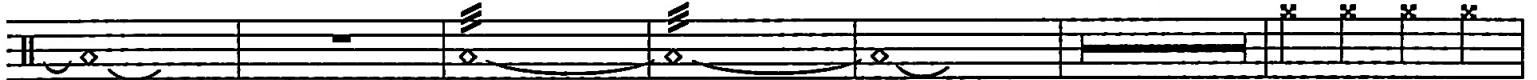
*p*  $\curvearrowright$  *f*

*p*  $\curvearrowright$  *f*

55 *Rall.*

3

59 *Maestoso* (in 2)



*f*

*p cresc.*

*mf*

*f*



67 *Tempo primo*

7

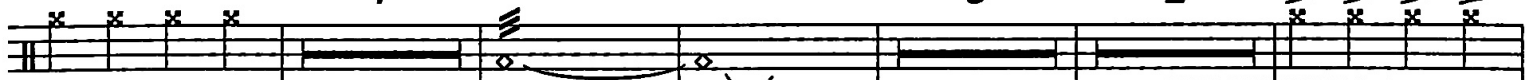
75

*Rall.*

5

2

83 *Triumphal*



*p*  $\curvearrowright$  *mf*

*f*

*Molto rall.*



*p*  $\curvearrowright$  *f*