

AMERICAN SALUTE

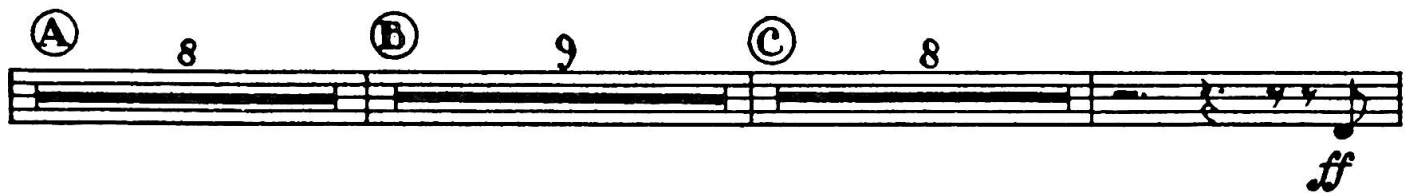
Based on "WHEN JOHNNY COMES MARCHING HOME"

Transcribed from
composer's original score
by Philip J. Lang

MORTON GOULD

Baritone (Treble Clef)

Allegro ♩ = 140



PROPERTY OF
COUNTRYSIDE HIGH SCHOOL
MUSIC DEPARTMENT

Baritone (Treble Clef)

F

2 4 8

G

3

ff *sffz*

soli

H

I

sffz

sffz *ff*

J

2

K

Broadly (♩ = ♩)

Trb. III

ff

